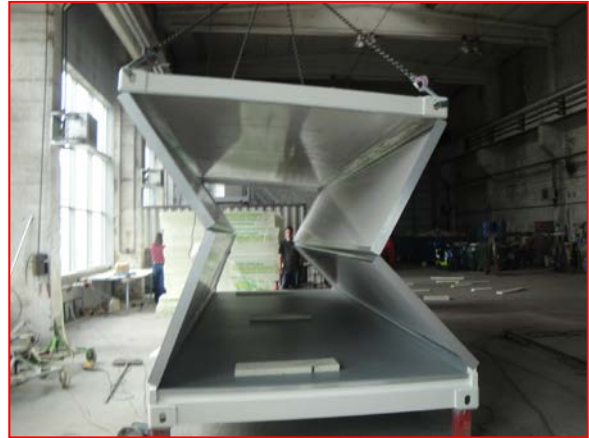


Multishelter - Collapsible Rapid Deployment Shelter



Stack of 4 shelters

The Multishelter weight is only 1500kg. 4 shelters are transported flat packed as a stack and can be set up in less than 5 minutes. No tools required!

The shelter is fitted with electrical wiring, lights, heating and air conditioning and will serve well as accommodation, office, medical facility etc.

Shelters can be joined together to form large rooms and can be set up 2 high.

Stairways and walking platform are available in aluminium and galvanized steel.