

## Mobile Medical Units

### 20 foot ISO Multifunctional Medical Units

Nordic Shelter has developed and delivered several different solutions and configurations for medical use.

Containers used as doctor office, ward, laboratory, pharmacy, storage and temperature-controlled storage are shown in the pictures below.

Units are with integrated electrical installation, HVAC and are easy to set up to be operational in short time.



## Mobile Medical Units

### 20 foot Hydraulic Expandable Medical Unit

This is an example of a mobile medical unit that is expanded electrical/hydraulically.

Full infrastructure and on-board support systems offered: Generator, HVAC, overpressure, BC-filtration etc to meet any requirement/function. Separate expandable Technical Compartment to accommodate support systems.



## Mobile Medical Units

### 20 foot ISO Re-deployable Multishelter

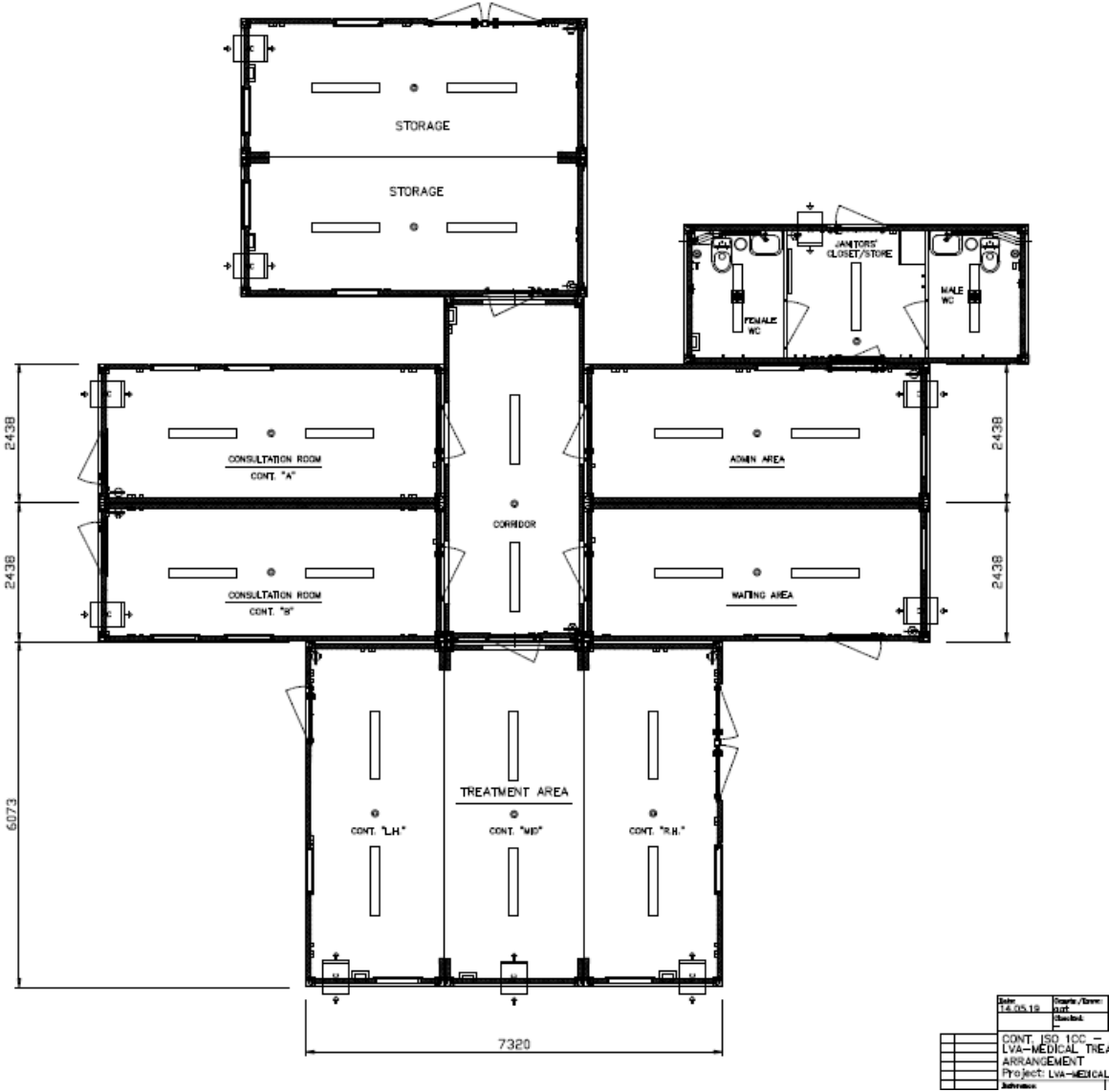
Transport efficient modules with integrated electrical wiring and light in the roof. 4 pcs equals 1 ISO 20 foot when stacked in transport mode. Easy set up and tear down, stackable in height. Energy efficient due to high thermal insulation value.



**Mobile Medical Facility – example**

This is an example of a mobile medical facility constructed with the Nordic Shelter CSC approved 20 foot ISO container elements.

The facility has fully integrated electrical panel, cabling, integrated LED lights and HVAC and is possible to transport, set up and tear down again.



# Mobile Medical Units

## Mobile Hospital Layout – example

This is an example of a mobile hospital constructed with the Nordic Shelter 20 foot 3in1 expandable shelters and standard 20 foot ISO containers.

