

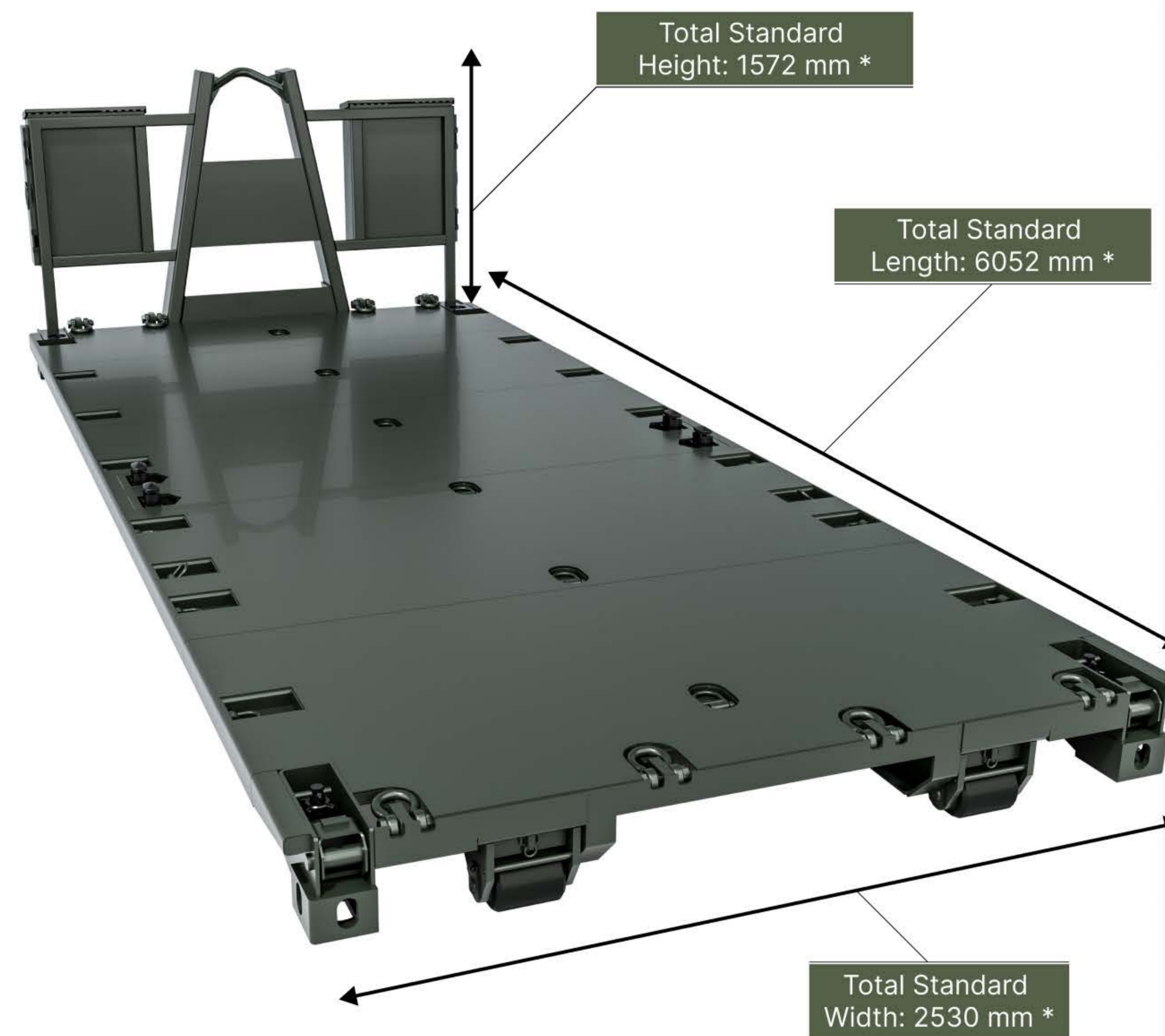
## FLATRACK

A versatile and proven logistics platform, the Nordic Shelter Flatrack is a key component of the Norwegian Armed Forces' RMMV hook-lift transport system. Built to ISO and STANAG standards, it offers high payload capacity and can be stacked up to four units high for efficient deployment. Delivered in over a hundred units, the flatrack is adaptable for transporting containers, palletized goods, and vehicles, including M113, BV 206, and other vehicle classes under 15 tons. Integrated lashing points and front-mounted toolboxes can be customized to meet specific operational needs, ensuring flexibility across a wide range of cargo types.



### SPECIFICATIONS

The flatrack is engineered to meet ISO and STANAG standards, featuring standardized dimensions of 6052 x 2530 mm, with the option to extend for requirements. Built from a robust steel structure, it supports an optimized payload of 14,620 kg, with a maximum gross weight of 16,500 kg and a net tare weight of 1880 kg. Designed for operational flexibility, it accommodates containers, palletized cargo, and vehicles, with lashing points rated between 2 and 8 tons. The flatrack includes foldable ISO locks, standard handling compatibility, and a multi-size freight system. It is CSC certified, stackable up to four units high, and optimized for secure and efficient logistics in military and industrial applications.



	<b>STANDARD DIMENSIONS:</b> 6052 X 2530 MM		<b>STACKABLE:</b> 4 IN HEIGHT
	<b>OPTIMIZED PAYLOAD:</b> 14.620 KG		<b>FLEXIBLE MULTI-SIZE FREIGHT SYSTEM</b>
	<b>MAX GROSS WEIGHT:</b> 16.500 KG		<b>NET TARE WEIGHT:</b> 1880 KG
	<b>STANDARD HANDLING COMPATIBILITY</b>		<b>LASHING POINTS:</b> 2 - 8 TONS
	<b>ISO STANDARDS COMPLIANCE</b>		<b>CSC CERTIFICATION</b>

\* CAN BE EXTENDED

### FEATURES

The flatrack is fully compliant with ISO and STANAG standards, featuring foldable ISO locks, reinforced lashing points, and front-mounted toolboxes for functionality. It is designed to transport one 20-foot container or two 10-foot containers and allows lashing points to be adapted to customer needs. The structure is insulated with sandwich panels and stainless steel sheets, ensuring durability and flexibility in operations.

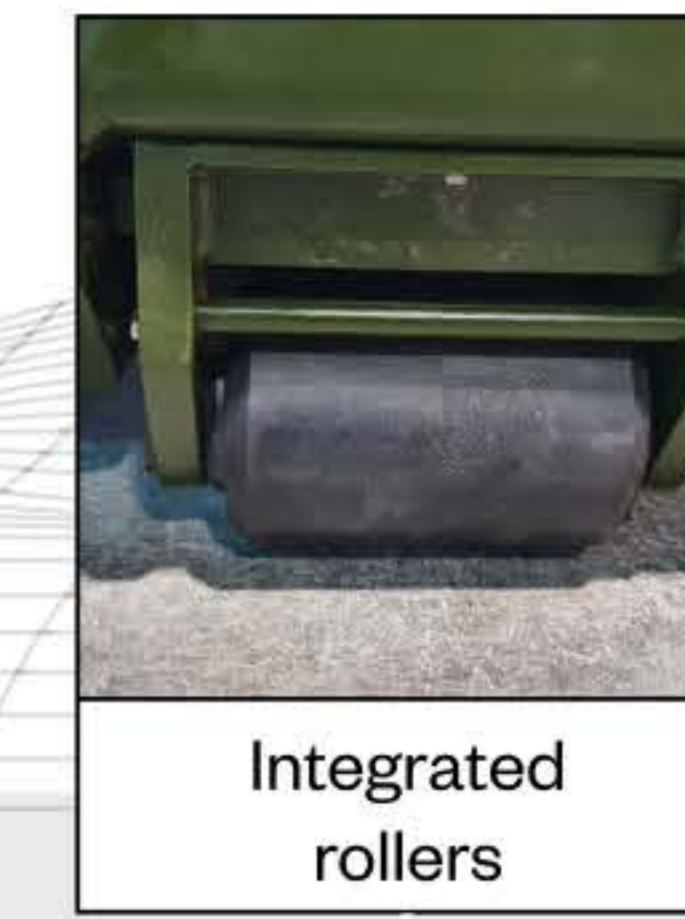
- ISO and STANAG compliant.
- Toolboxes in front on each side.
- Foldable ISO-locks.
- Lashing points/rings can be adapted/modified to customer needs.
- Can transport 1 x 20 foot container or 2 x 10 foot containers.
- Purpose of the flat rack platform is to transport following cargos:
  - x2 pcs 10 Ft containers
  - x1 pc 20ft container
  - NATO or EUR pallets
  - Equipment or vehicles



ISO and STANAG compliant



Stackable up to 4 units in height



Integrated rollers



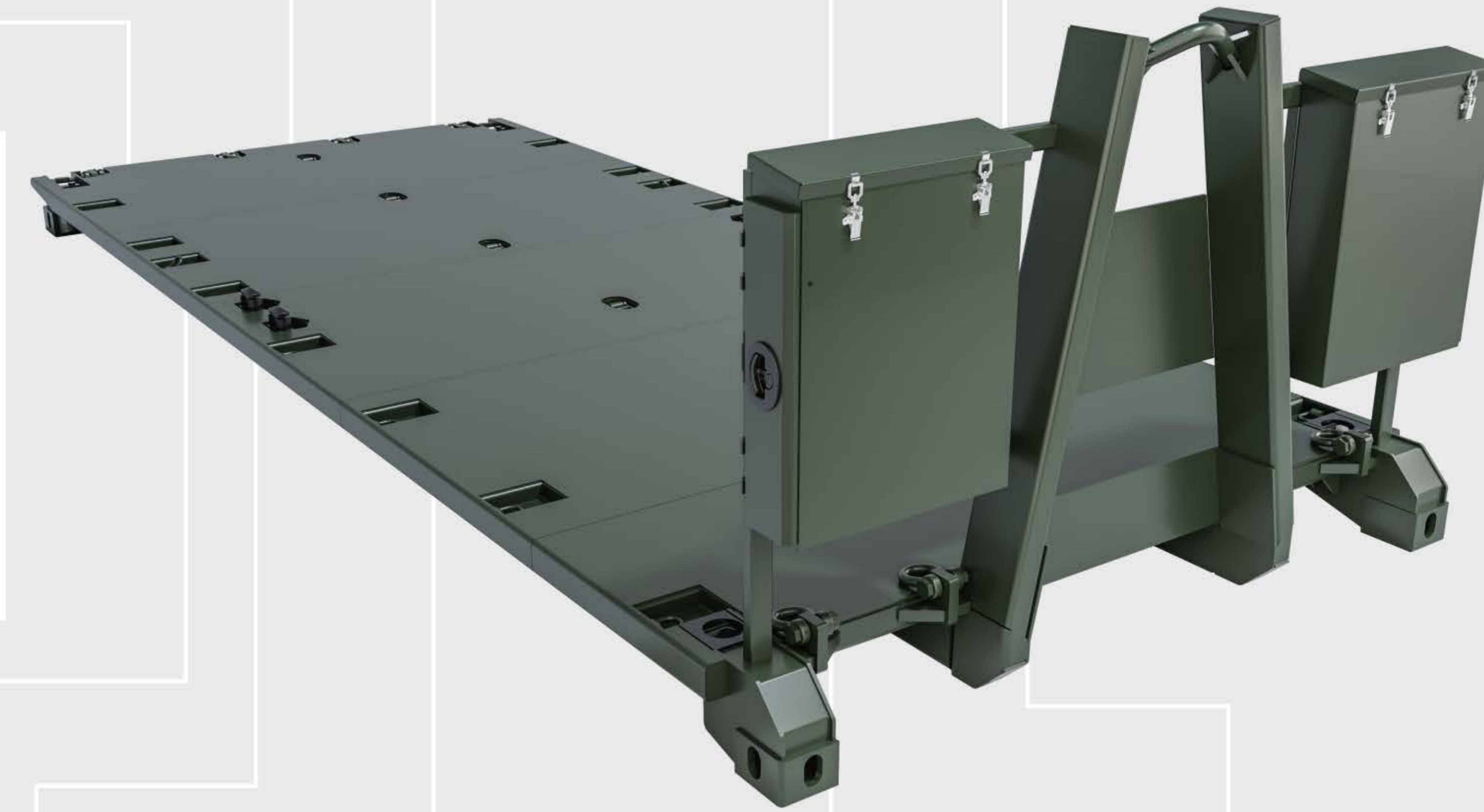
Toolboxes with locks



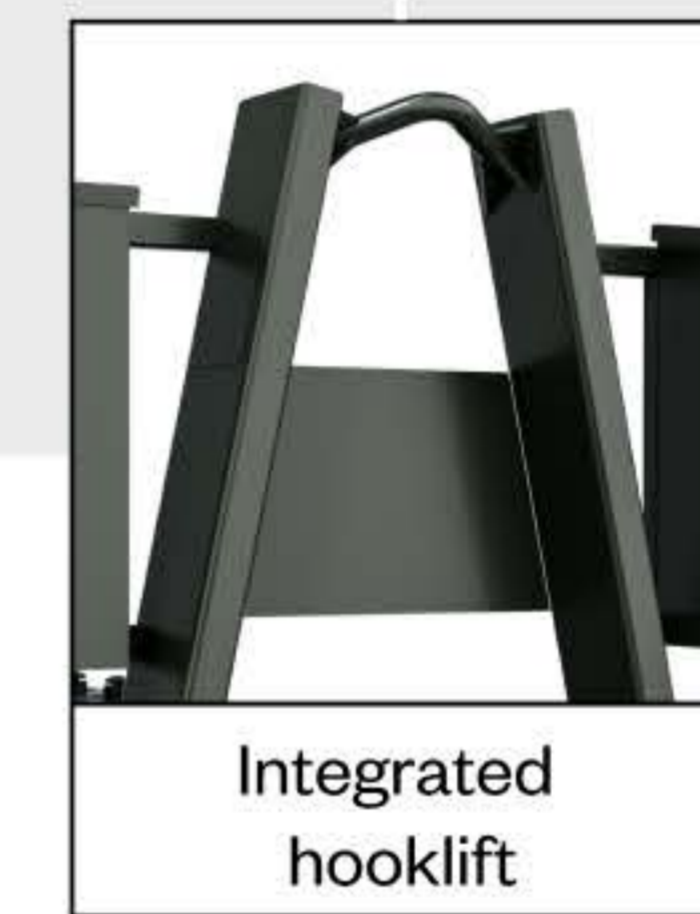
Lashing Points

### OPTIONS

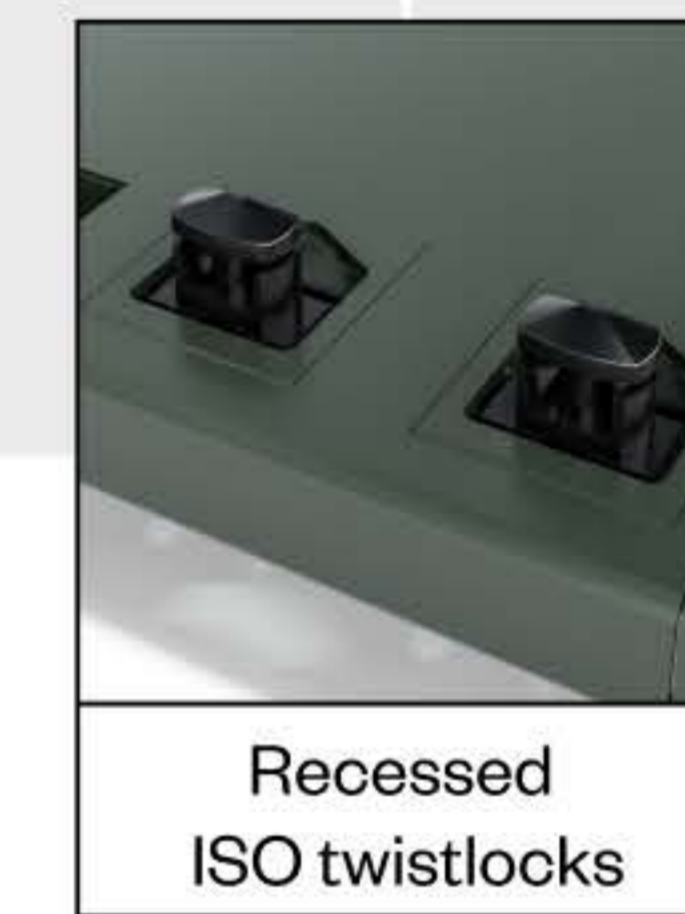
The flatrack can be adapted with a variety of optional features to meet specific operational and logistical needs. Custom lashing layouts, integrated toolboxes, and mission-specific modifications ensure flexibility across different cargo types and deployment scenarios. Each unit can be individually tailored to enhance functionality, efficiency, and compatibility with existing systems.



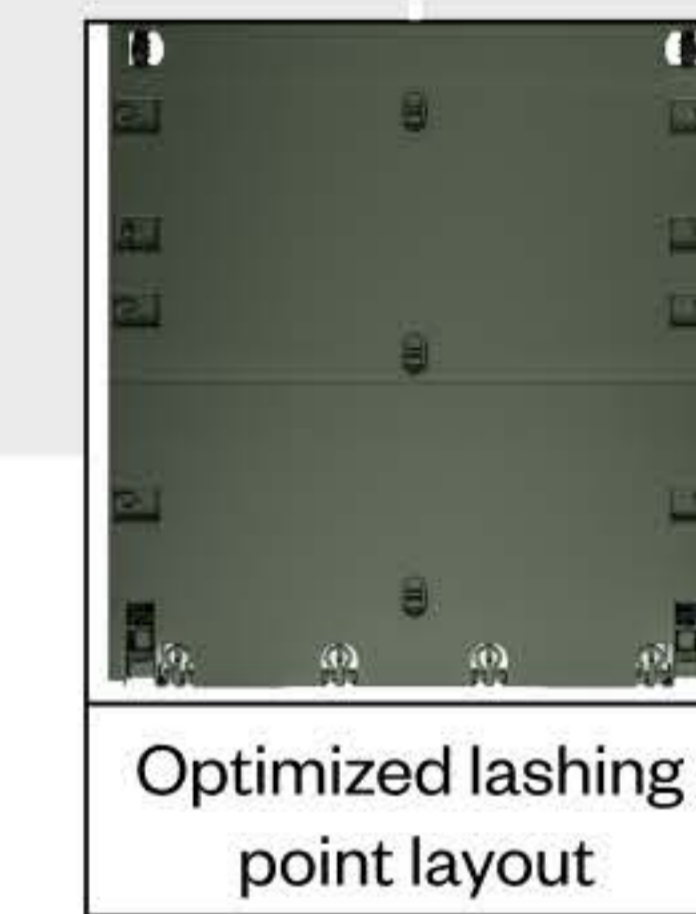
Multi - purpose logistics platform



Integrated hooklift



Recessed ISO twistlocks



Optimized lashing point layout



Foldable ISO locks

### PRODUCT IMAGES

